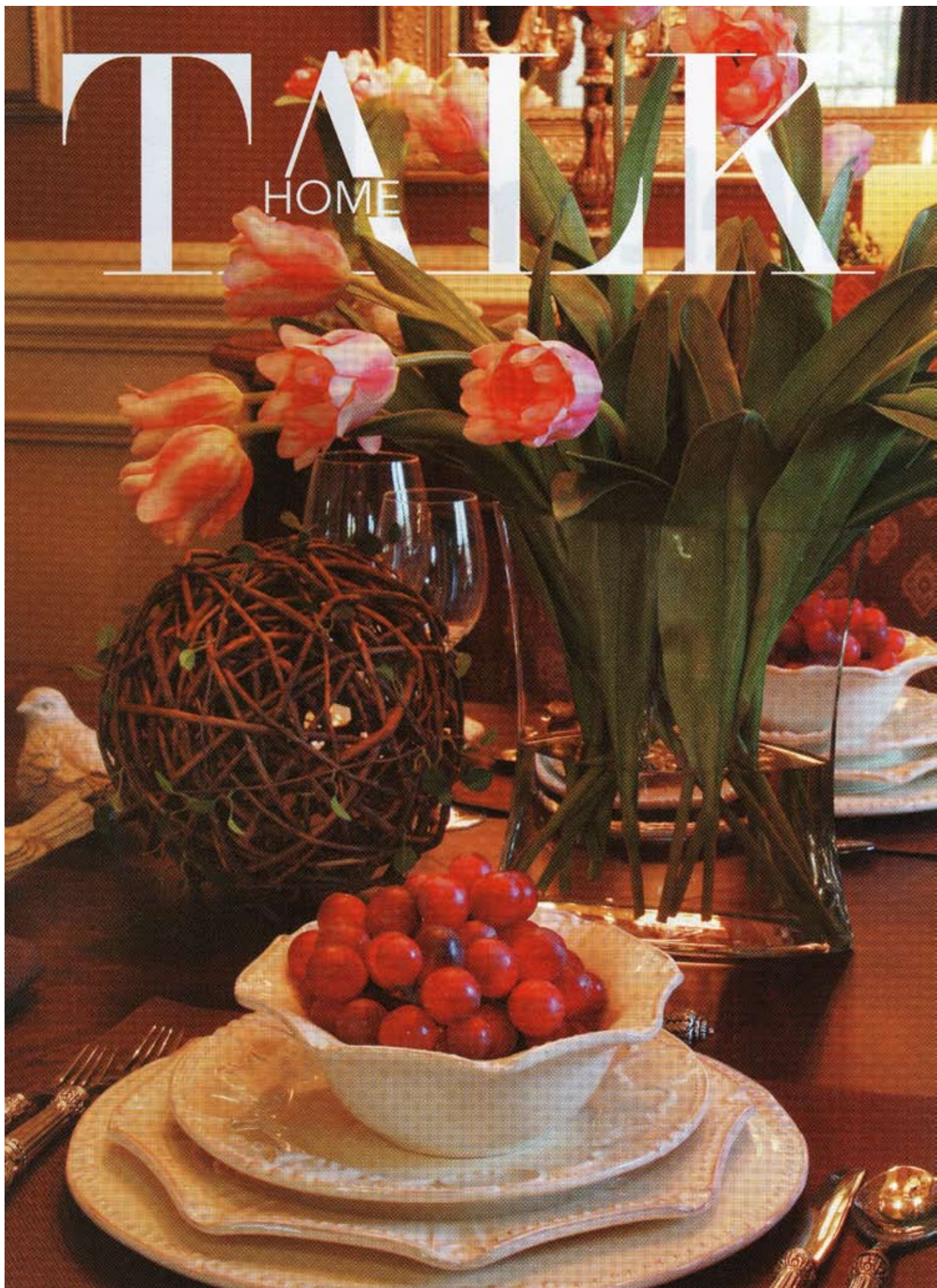


TALK

HOME



Welcome Home

written by
Kim Hassold

photographed by
Owen Riley

COVER PAGE: Special details in every room of the Tuscany Falls home welcome everyone who enters.

RIGHT: The floor plan selected is Walker's Bluff by residential designer Rick Gary. Gary's mission was to capture innovative architectural and design details, with rooms defined more by unique elements and accents rather than by size.

INSET: Although the designers were responsible for individual rooms within the house, they worked together to create a dream home perfect for any family. (THE DESIGNERS, LEFT TO RIGHT) Leslee O'Kelly of WorkSpaces Inc., Julie Phillips of JP Collection, Susan Peace-Vernon of Dillard-Jones Builders LLC, Barrie Kay of Kay Concepts & Design LLC, Stefanie Tillman of Zaidee Estella's Interiors & Fine Living, Tom Dillard, Brian Brigham Lehman of The Galleries of Brian Brigham.

Walking into the brand new home in the Tuscany Falls development, one can't help but be excited about what we'll find there. After all, the home is the Southern Living Custom Builder Showhouse built by Dillard-Jones Builders, Inc. and we are scheduled to be greeted by none other than Tom Dillard himself. We've heard he's a likeable fellow, who along with the massive team who put this 4-bedroom, 4.5 bath home together is anxious to share the end result with all of us.

It should be no surprise we loved what we found, and walked away confident in the fact that from hand-cut exterior woodwork to hand-hammered ornamental ironwork, custom craftsmanship is on display all around this house.

In addition to its beautiful looks, the home boasts green features such as positioning to protect mature trees, recycled wood beams, a sealed and conditioned crawlspace... well you get the idea.

Five designers worked together to get the finishing touches just right and Tom Dillard will be the first to tell you that the end result is nothing less than spectacular.

And after being there ourselves, we would wholeheartedly agree.





OPPOSITE: The foyer shows a first glimpse of hardwood flooring and custom ironwork used throughout the home.

LEFT TOP: A view into the study from the foyer showcases double windows and natural lighting.

LEFT BOTTOM: Designers chose each accessory with an eye for individuality in each room.

ABOVE: A two-story study allows room for a custom chandelier and built-in bookcases.



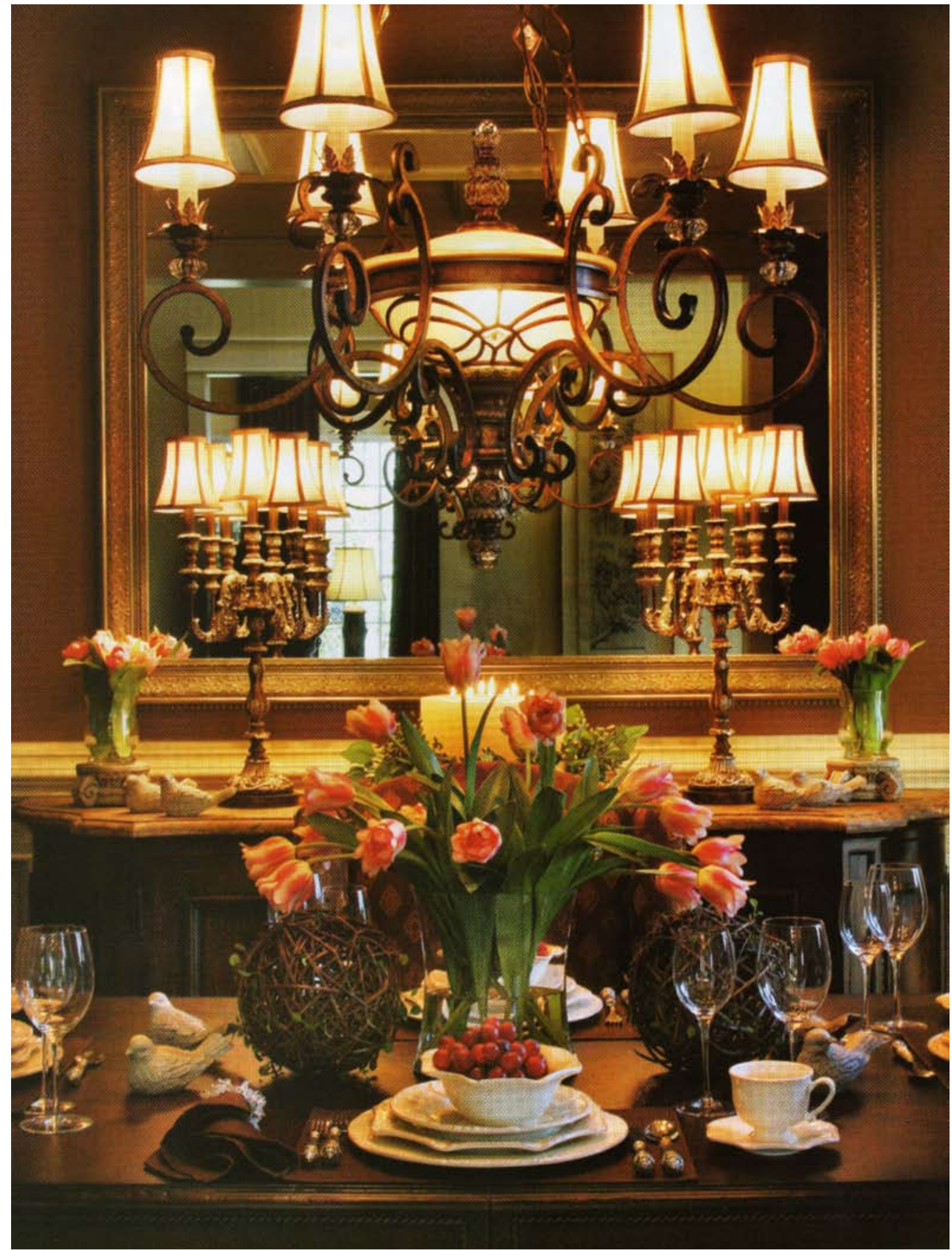
See more home photos at www.talkgreenville.com.



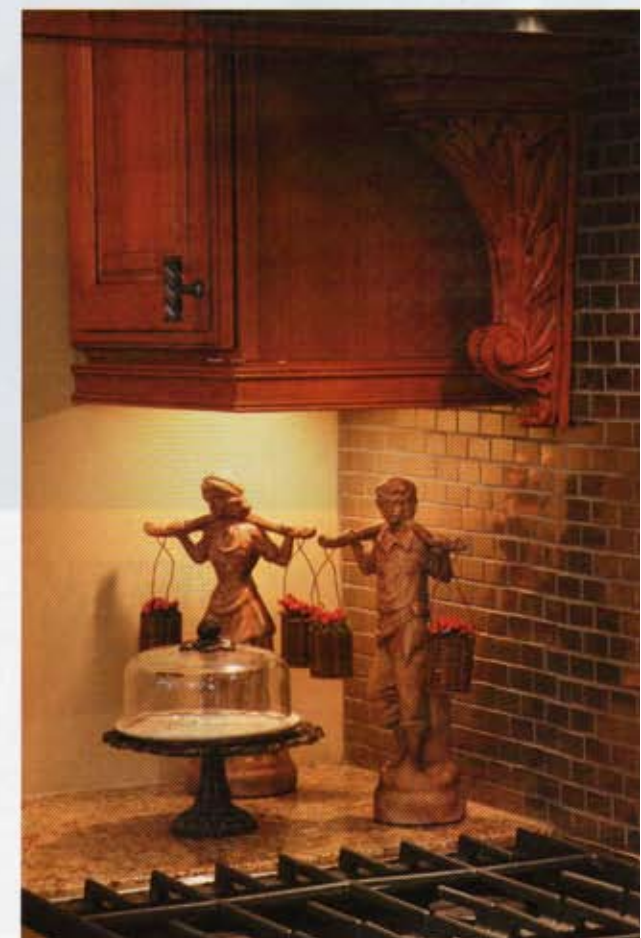
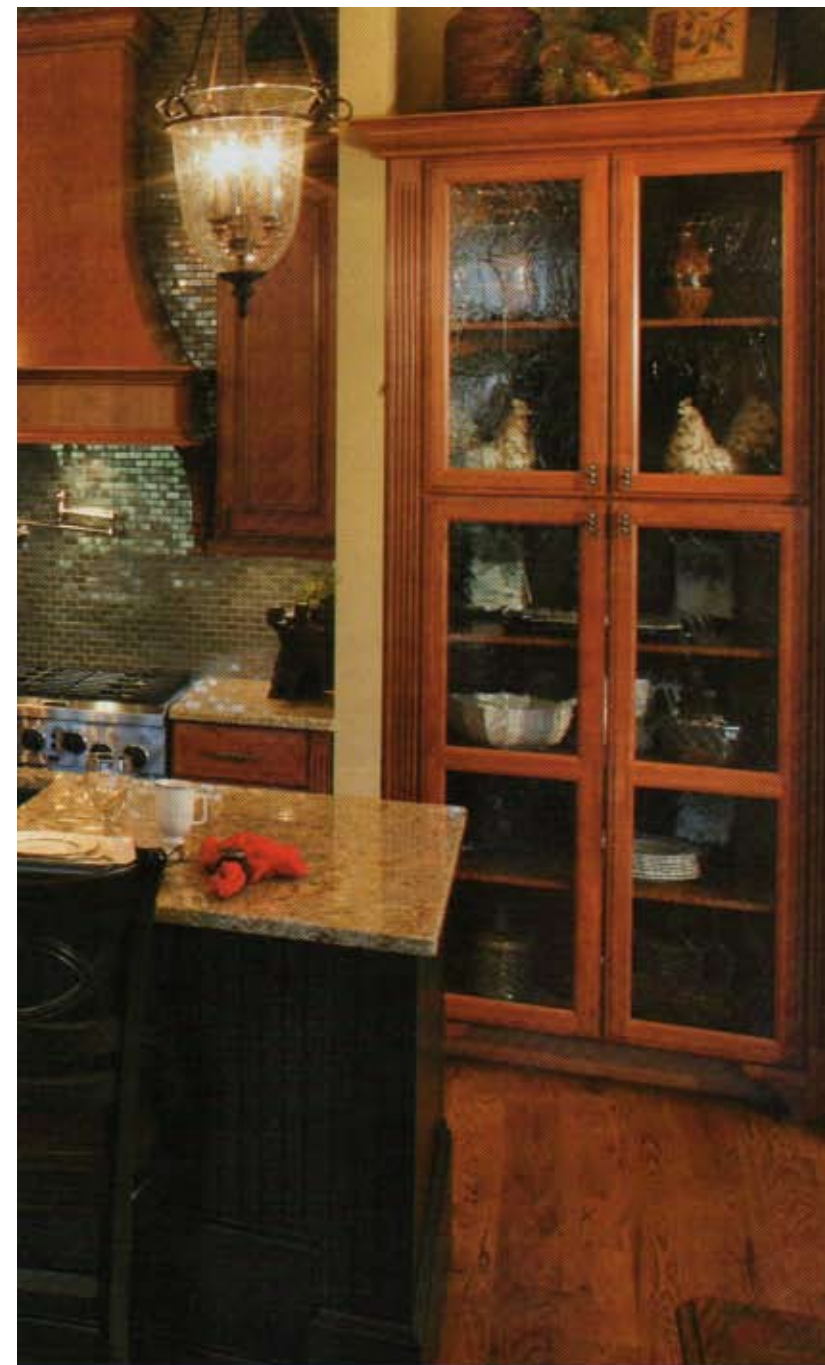
ABOVE: Designer Stefanie Tillman furnished the dining room with comfortable seating and lighting to showcase the coffered ceiling.

RIGHT: A butler's pantry between the dining room and kitchen continues the individual style of the home with space planning and design for maximum use of space.

OPPOSITE: A closer view of the dining room provides a look at the attention to detail in each area.



See more home photos at www.talkgreenville.com.



See more home photos at www.talkgreenville.com.



ABOVE: Granite countertops in the kitchen, which was designed by Julie Phillips, provide a perfect surface for dining and workspace.

OPPOSITE TOP: Stainless steel appliances meet guidelines for energy efficiency and complete the kitchen's role as a gathering place for family and friends.

OPPOSITE BOTTOM: Custom cabintrey in the kitchen area wraps around the stovetop and blends beautifully with granite countertops.

OPPOSITE INSET: A view from the kitchen into the family room illustrates the open floor plan used throughout the home.



See more home photos at www.talkgreenville.com.

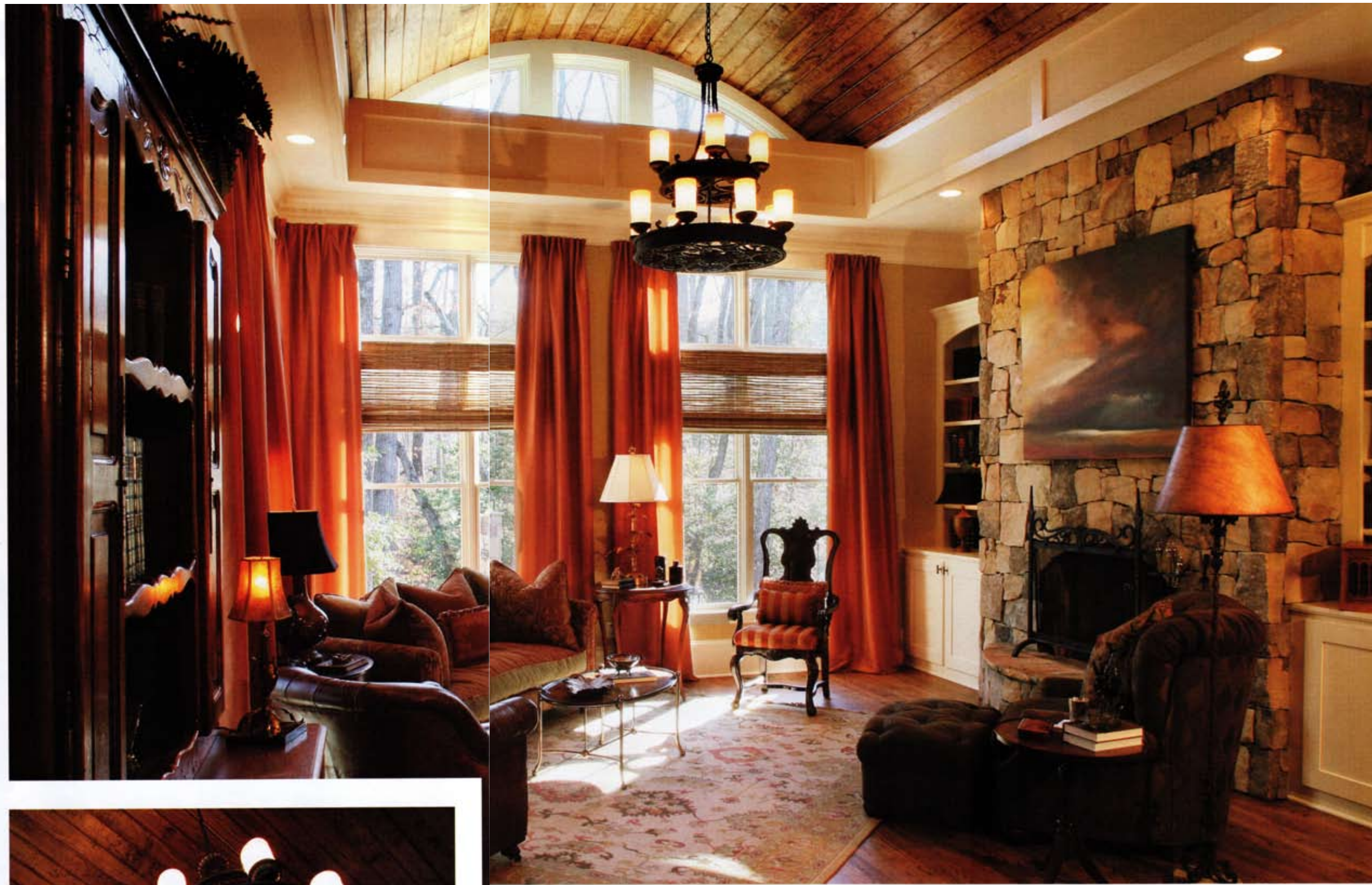


ABOVE: Prints hung over a small chest in the breakfast area carry the color scheme from one room to another.

LEFT TOP: The large kitchen area provides room for a unique piece and the perfect home for books and decorative plates as well as additional storage.

LEFT BOTTOM: One peek into the wine cellar also affords a closer look at the intricate ironwork created by craftsmen from Heirloom Stair & Iron.

OPPOSITE: The view from the breakfast area into the kitchen.



ABOVE: Comfortable seating, a vaulted barrel, cypress wood ceiling and a stone fireplace – what more could a family room hold?

OPPOSITE TOP: A painting by local artist Ric Standridge adds to the individualized touch used by the designers in each room.

OPPOSITE BOTTOM: Railings leading upstairs and balustrade seen at right at the upstairs media center were designed for the space. The balustrade features a palmetto tree medallion hand hammered by James Moseley using a repousse technique.

OPPOSITE INSET: The vaulted ceiling is a perfect partner to custom lighting fixtures.



See more home photos at www.talkgreenville.com.



OPPOSITE: The master bedroom, designed by Brian Brigham Lehman, features old and new furniture as well as custom lighting chosen for the space.

ABOVE: A seating area in the bedroom serves as a quiet getaway.

RIGHT: The master bath contains a unique tub and custom lighting.



LEFT: Artwork in the master bedroom supports the peaceful atmosphere.

ABOVE: Cabinetry in the master bathroom has been faux finished by Jeremy Greer of MacGregor's Architectural Faux Finishes.

RIGHT: A close-up of furniture and wallpaper in the master bath again recognizes the care put into choosing furnishings for each room.





See more home photos at www.talkgreenville.com.



ABOVE: Barrie Kay used a frog theme for the children's room which dictated colors.
 OPPOSITE TOP: The room was designed to be appropriate for a range of ages.
 OPPOSITE BOTTOM: An adjoining bathroom continues the theme.
 OPPOSITE INSET: Accessories mirror the color scheme in the children's room in a welcome sign and coordinating lamps.

Outdoor living spaces include a backyard patio with fireplace and stone work with exposed beams.

